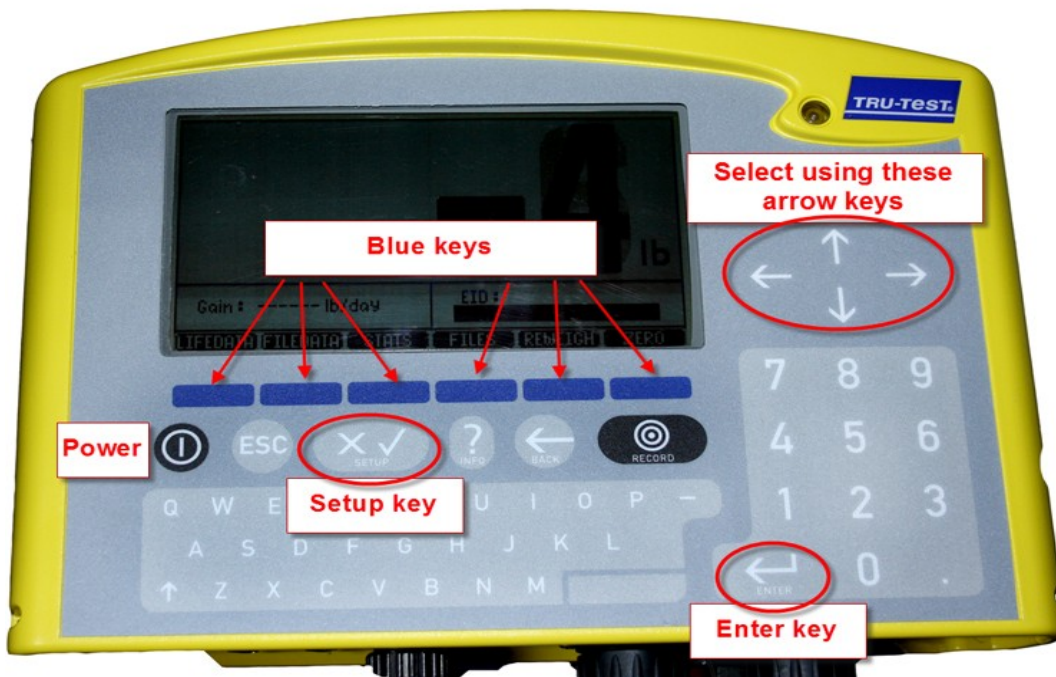


# Bluetooth link to Tru-test XR3000

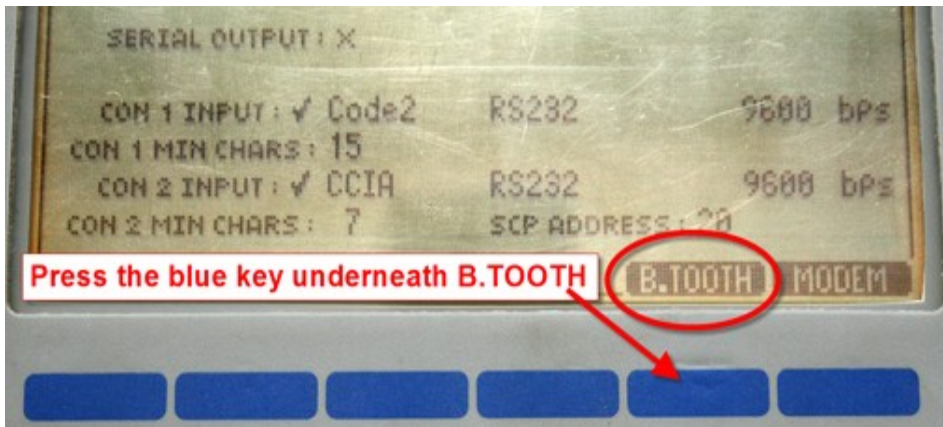


## Enable Bluetooth in the Tru-Test XR3000

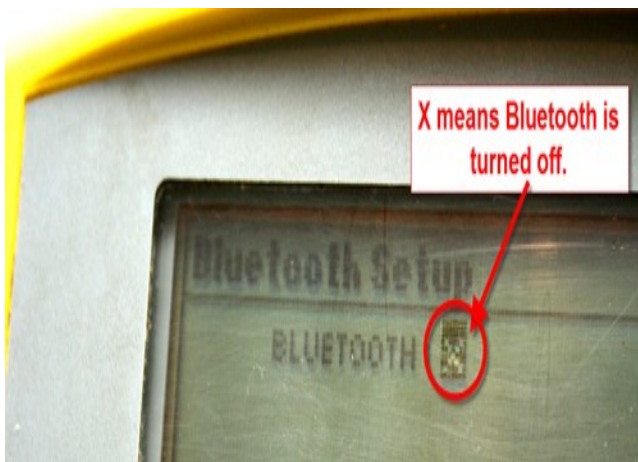
1. Turn on the XR3000.
2. Press the **Setup** key. The Weighing Setup screen opens.
3. Find the double arrow >> and press the blue key underneath.
4. Find the **Serial** tab and press the blue key underneath.



5. The Serial Setup screen opens. Find the **B.TOOTH** tab and press the blue key underneath.

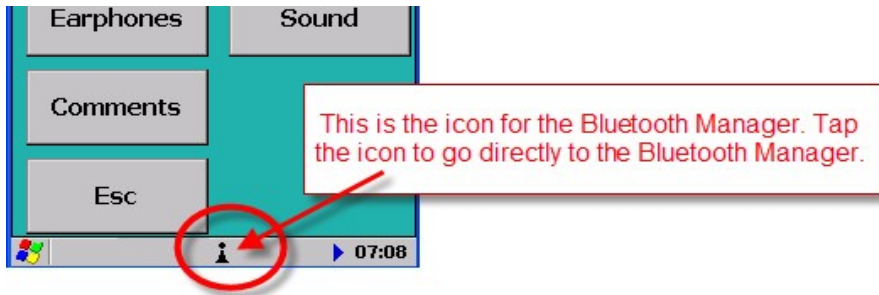


6. On the Bluetooth setup screen there should be a tick next to BLUETOOTH. If there is an X then press the **Enter** key and use the arrow keys to change to a tick.
7. The XR3000 is now ready to be paired to the Psion.

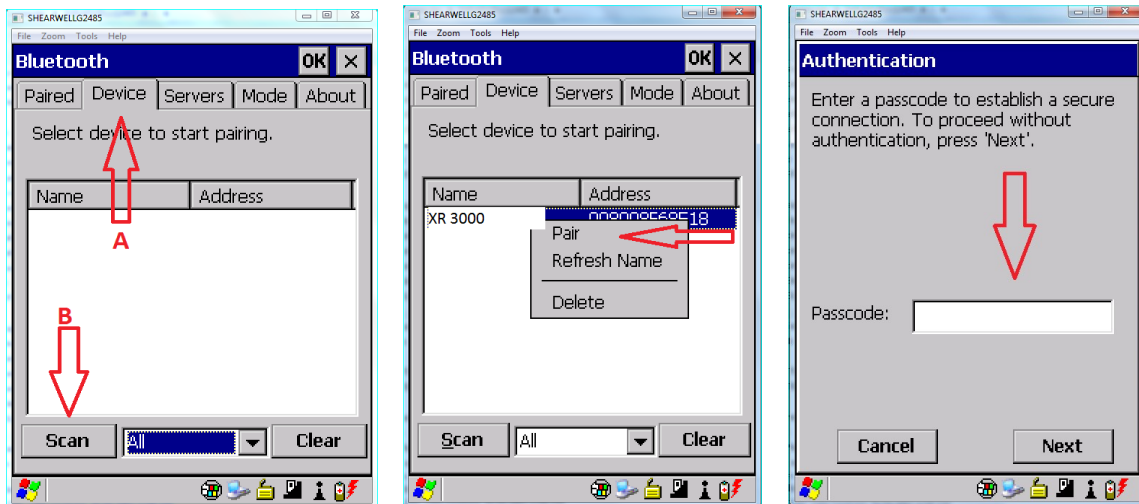


# Pairing the Psion to the Tru-test XR3000

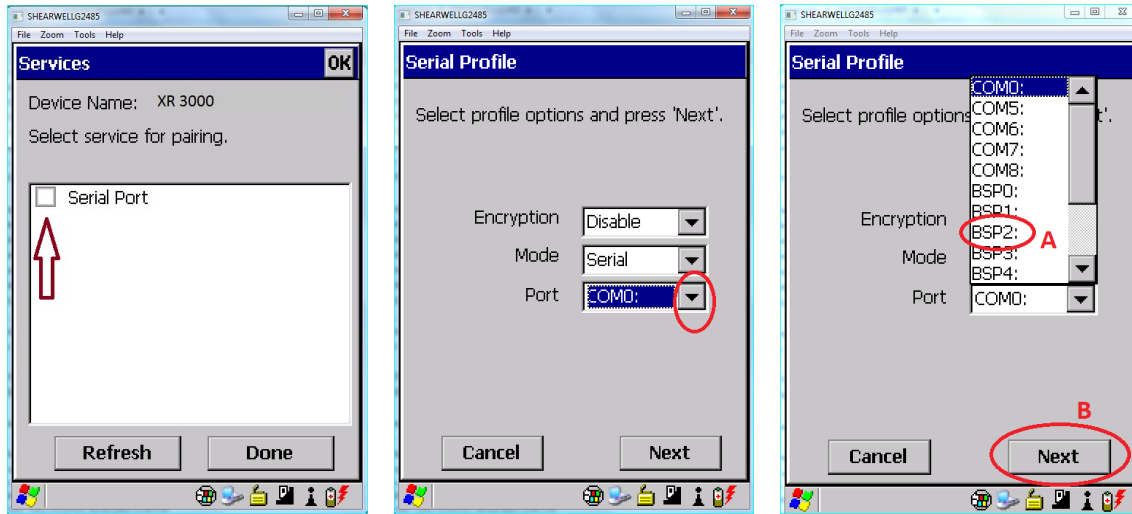
1. A shortcut to the Bluetooth Manager is to tap the BT icon on the bottom taskbar.



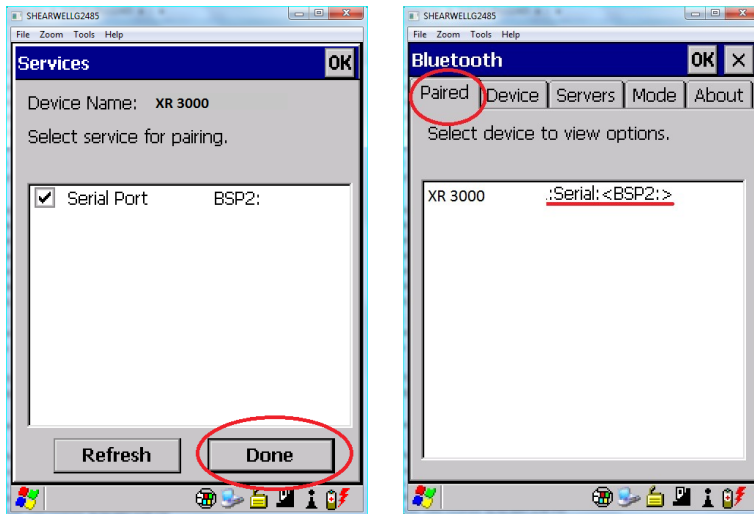
2. On the devices tab select the XR3000. If the XR3000 is not on the list click **Scan** and the Psion should find it.
3. Click on the XR3000 line and click Pair.
4. Enter the Passcode, for Shearwell products it is "1111", the XR3000 might be "default" (Some devices don't require a PIN) and click next.



5. Select serial port.
6. Click the dropdown box from "Port"
7. Select BSP2 (or select an other BSP # but do **not** use BSP0 or BSP1 or any of the COM ports) and click Next.



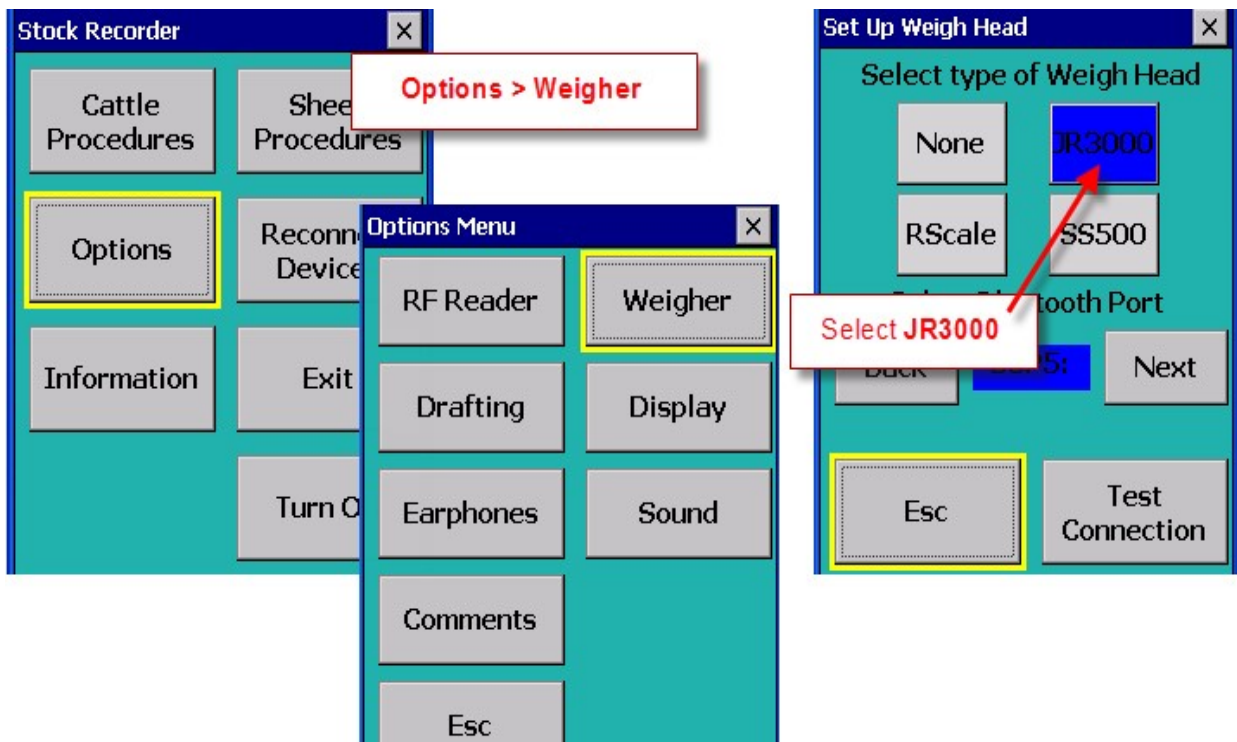
8. Select done.
9. Go to the Paired tab and make note of the selected BSP# (BSP2)

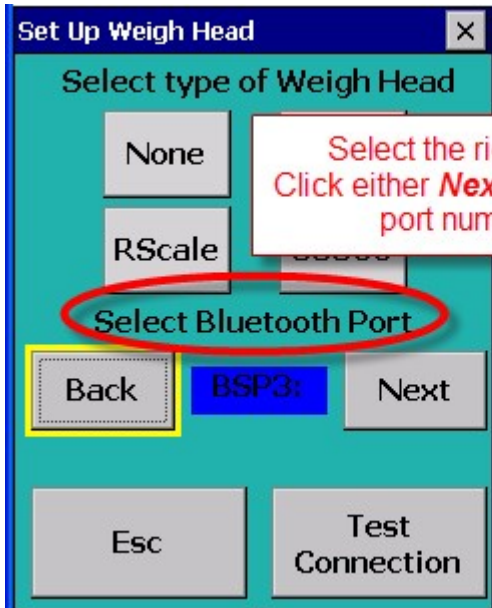


10. Close the Bluetooth manager.
11. Your Psion is now paired to the XR3000.

## Setup FarmWorks (psion) to receive data from the XR3000

1. Open FarmWorks on the Psion.
2. Select **Options.**, then **Weigher.**
3. Select **JR3000**
4. Select the right Bluetooth port number - the BSP number from the Bluetooth Manager.  
Click backwards and forwards using the **Back** and **Next** buttons until you find the correct BSP number.
5. Click **Test Connection.** The message **Connection Established** means the Psion and XR3000 have been successfully connected.





Select the right Bluetooth port.  
Click either **Next** or **Back** to reach the  
port number you need.

